



newt^on
high-speed lite-lift[®]

STANDARD
TEXTILE est. 1940



Revolutionize shade control with our most elegant manual shade option.

A CHAIN-FREE, LOW MAINTENANCE SOLAR SHADE EXPERIENCE.

Say goodbye to the hassles of corded shades and the maintenance nightmares of motorized shades. Solar Shades with Newton High-Speed Lite-Lift® Technology ("Newton") offers a smooth, intuitive wand-controlled operation that's as simple as a gentle pull. This patented chain-free solar shade design simplifies operation, enhances durability, and improves product safety.

ACCESSIBILITY

Choose from the standard wand or a more accessible loop wand. Both can be operated with one hand and require minimal force, meeting the needs of users of all abilities.

For projects requiring specific accessibility standards, we offer shades manufactured to be compatible with the applicable requirements in the **US 2010 ADA Standards for Accessible Design and California Building Code Section 11B-309.4**.

SAFETY STANDARDS

Newton complies with the industry-recognized safety standard (**ANSI/WCMA A 100.1-2022**) for window coverings. In addition, this innovative solar shade technology has been certified as "**Best for Kids**", a safety program sponsored by the Window Covering Manufacturers Association (WCMA).

TAILORED TO YOUR SPACE

Whether a welcoming hotel lobby, a tranquil hospital room, or a bustling student union, Newton offers flexibility to suit any client's specific needs. Currently available as a single bracket option, you can pair an inside-mount sheer with an outside-mount blackout for the ideal sleep settings. On blackouts, we recommend a 6" overhang on each side of the window for optimal room-darkening.

Personalize your look with our curated fabric collections or create a custom print for the ultimate design statement. The possibilities are limitless!

Newton High-Speed Lite-Lift[®]

DETAILS

- Patented chain-free solar shade design.
- Counter balance shade system delivering smooth operation lowering and raising shades.
- Non-friction module (clutch) allows lowering shade by bottom hem bar.
- Noise reducing proprietary spring encased in resin.
- Available in single shade only. For light control, inside mount sheer and outside mount blackout are recommended.
- Max Width up to approximately 144" W x 132" L, Minimum width is 15" W x 18" L (based on fabric selection).
- Shade comes with installation brackets, end caps included if installing outside mount.
- Wands can be operated from all angles due to rubber gasket at top of wands.
- Fascia is 3.625" H, Satin finish.

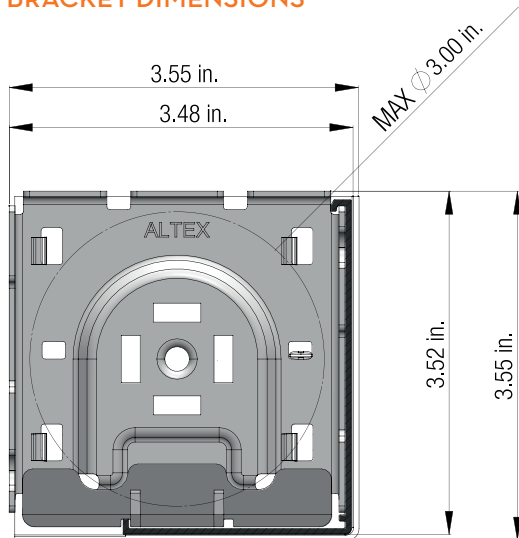
OPTIONS

- Types of installation - see page 13.
- Regular and reverse roll available.
- 1-1/2" fabric wrapped hem bar with heat sealed ends standard.
- Accessible loop wands available - see page 9.
- Standard wand positions - see page 7.
- Wand lengths - see page 8.
- Available finish color options - see page 12.
- Magnetic hold down for wands (inside mount only) available for upcharge.
- Side channels.
- Fabrics - blackout, 1%, 3%, 5% options, custom printing available on all openness options.

ALUMINUM FASCIA



BRACKET DIMENSIONS



Newton High-Speed Lite-Lift®

DETAILS

- Patented chain-free solar shade design.
- Counter balance shade system delivering smooth operation lowering and raising shades.
- Non-friction module (clutch) allows lowering shade by bottom hem bar.
- ALS (Altex® Locking System) system integrated.
- Noise reducing proprietary spring encased in plastic.
- Available in single shade only. For light control, inside mount sheer and outside mount blackout are recommended.
- Max Width up to approximately 144" W x 132" L, Minimum width is 15"W x 18" L.
- Shade comes with installation brackets, end caps included if installing outside mount.
- Wands can be operated from all angles due to rubber gasket at top of wands.

OPTIONS

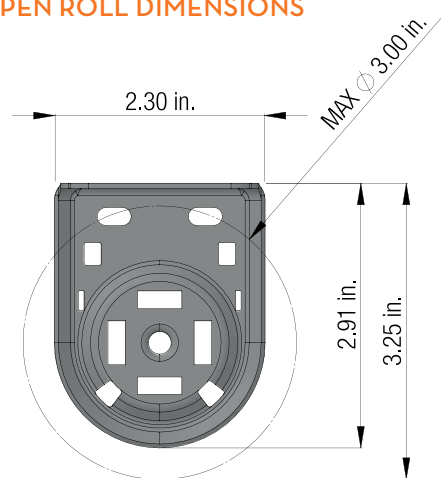
- Types of installation – see page 15.
- Regular roll and reverse roll available.
- 1-1/2" fabric wrapped hem bar with heat sealed ends standard.
- Accessible loop wands available – see page 9.
- Standard wand positions – see page 7.
- Wand lengths – see page 8.
- Available finish color options – see page 12.
- Magnetic hold down for wands (inside mount only) available for upcharge.
- Fabrics – blackout, 1%, 3%, 5% options, custom printing available on all openness options.



OPEN ROLL SYSTEM LIGHT GAP

3/4"	Mechanism Side
1/2"	End Plug Side
3/4"	Leveling Connector Side
11/16"	Multi-Mechanism Junction
11/16"	Tandem Junction

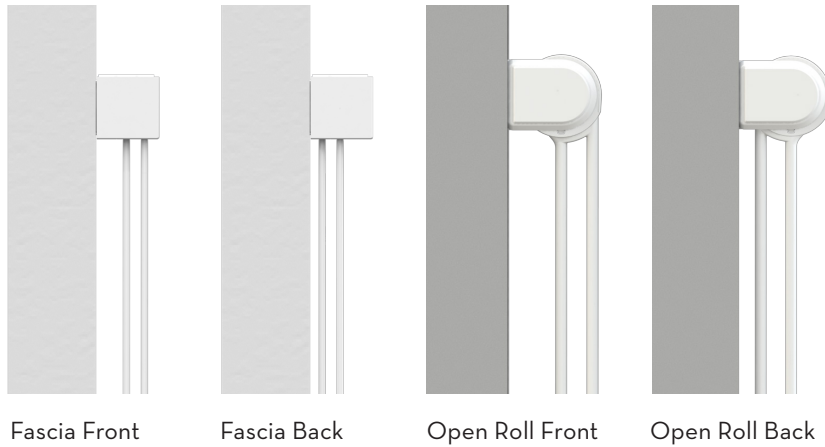
OPEN ROLL DIMENSIONS



STANDARD WANDS

Newton High-Speed Lite-Lift®

STANDARD WAND POSITIONS



IMPORTANT

- Wands position may vary depending on the product concealment, the shade configuration and the type of installation. See the chart below for full details.
- For wands position contrary to the standard position, please specify when ordering.

CONCEALMENT	INSIDE WINDOW FRAME INSTALLATION		OUTSIDE WINDOW FRAME INSTALLATION	
	REGULAR ROLL	REVERSE ROLL	REGULAR ROLL	REVERSE ROLL
Open Roll	Front	Front**	Back	Front**
Aluminum Fascia	Front	Front**	Back	Front**

* Position contrary to the standard position not available.

** Back position available, but not recommended since access to the wands would be more difficult.

STANDARD WAND LENGTHS

Distance top of shade to the floor	Standard Wand Lengths
134 1/8" and more	Custom
124 1/8" - 134"	80"
114 1/8" - 124"	70"
104 1/8" - 114"	60"
94 1/8" - 104"	50"
84 1/8" - 94"	40"
84" and less	30"
Exceptions	
Shade Height 18" - 30" inside mount installation	18"
Shade Height 18" and less	inside mount installation not recommended

IMPORTANT

All orders must include measurement of top of shade to the finished floor.

Wand lengths are configured based on this measurement.

ADA WANDS

Newton High-Speed Lite-Lift[®]

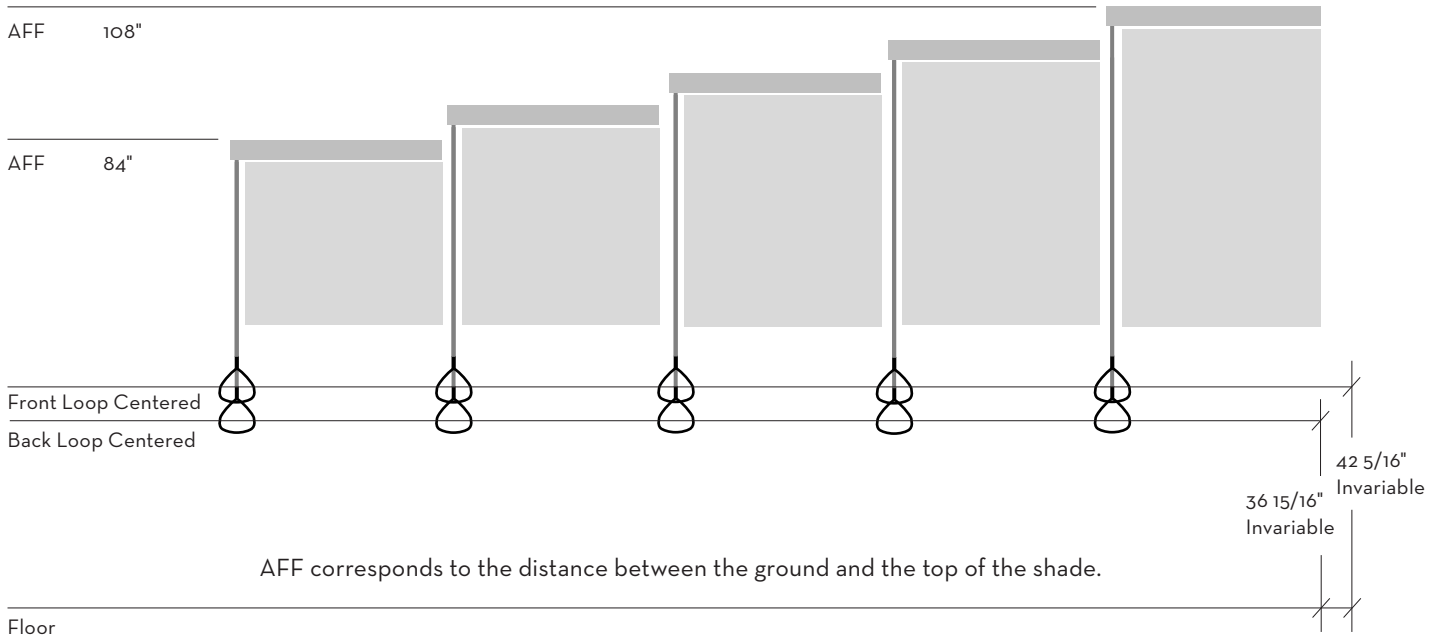
LOOP WANDS



ADA Wands Available in Black and White

ABOVE FINISHED FLOOR (AFF) - UP TO 108"

The wands lengthen as AFF increases.



SAFETY STANDARDS

Meets the following safety standards: ANSI/WCMA A 100.1-2012 safety standard and the "Best for Kids" qualifications. This third party certification program specifies criteria to identify window covering products that are best suited for use in homes or facilities in which young children are expected to be present.



IMPORTANT

All orders must include measurement of top of shade to the finished floor. Wand lengths are configured based on this measurement.

COMPONENT OPTIONS

Newton High-Speed Lite-Lift®

WANDS

- Aluminum wands are adorned with a chrome-plated steel ring and end with a plastic handle.
- Accessible loop wand – loop is available in black and white.

MAGNETIC HOLD DOWN

- Magnetic hold down for standard and loop wands.
- Available option for inside mount shades only.

FASCIA

- Fabric-covering of the fascia is not available.

END CAPS

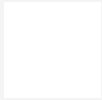
- Plastic end caps.
- Come standard with outside mount open roll and fascia shades only.

BOTTOM BAR

- 1-1/2" fabric wrapped.
- Standard option is fabric wrapped, heat sealed on ends.

ALUMINUM COLORS

Wands, Magnetic Hold Downs, Fascia



Pure
White



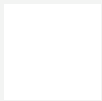
Clear
Anodized



Black

PLASTIC COMPONENT COLORS

End Caps, Handle End on Wand



Pure
White



Graphite



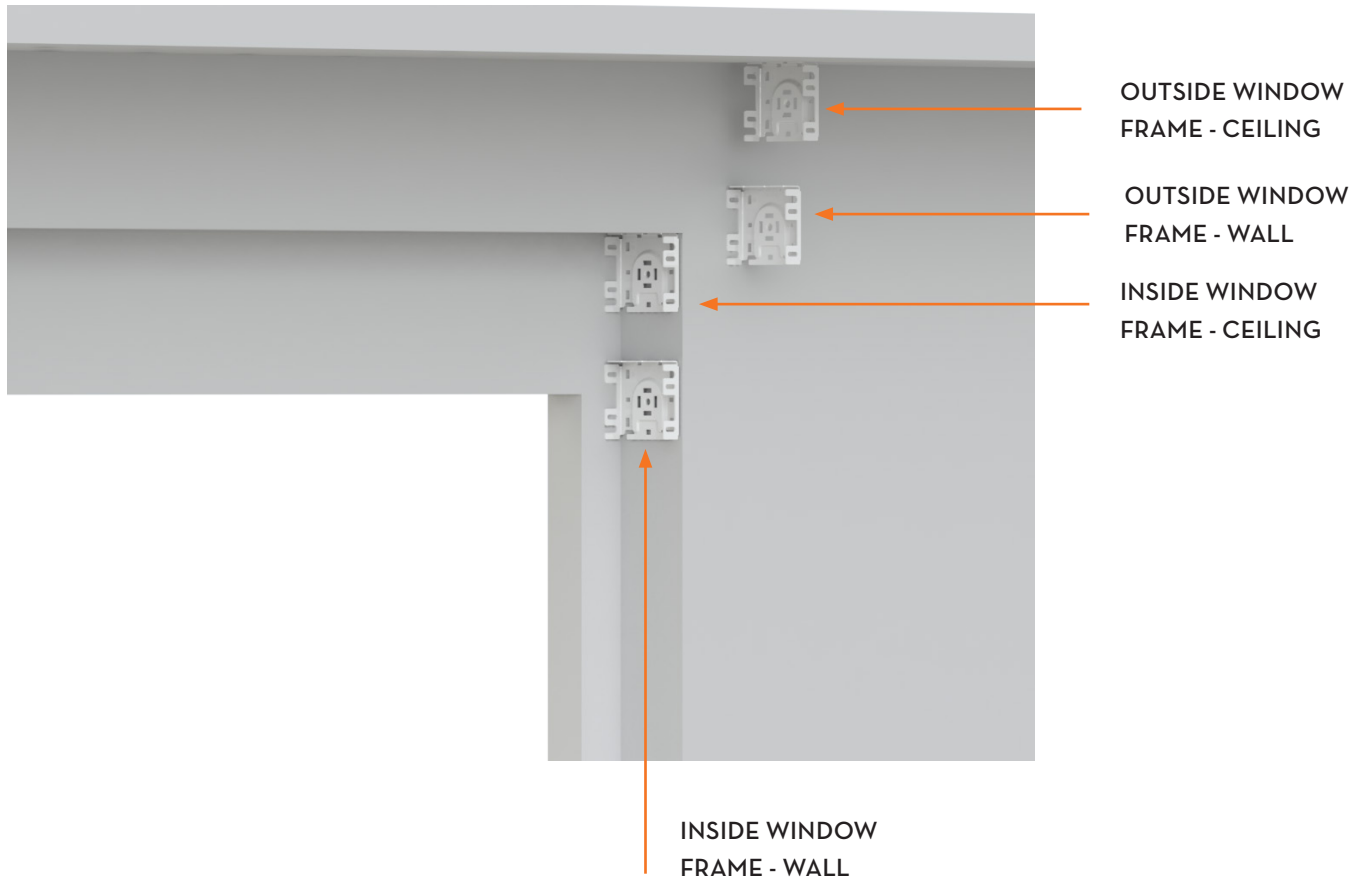
Black

MAGNETIC HOLD DOWN

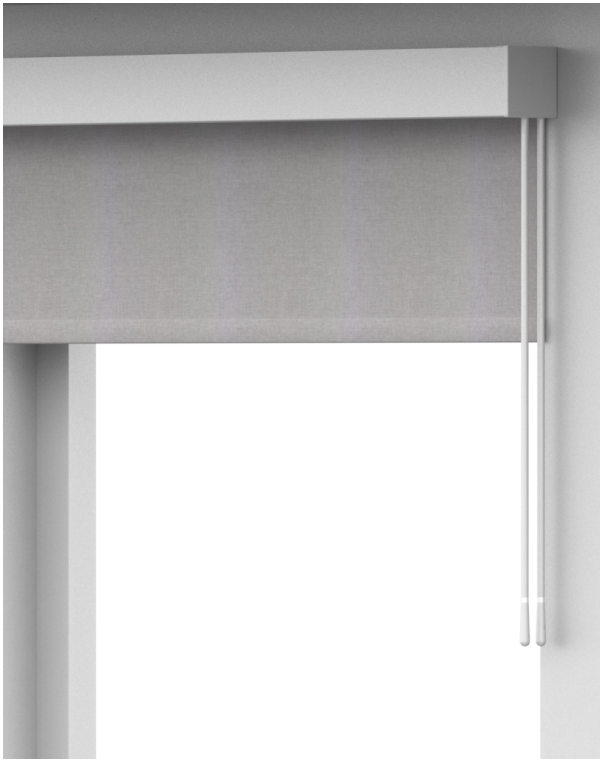


Device for magnetic wands, for inside mount installation only.

Newton High-Speed Lite-Lift[®]



Brackets shown are Aluminium Fascia.

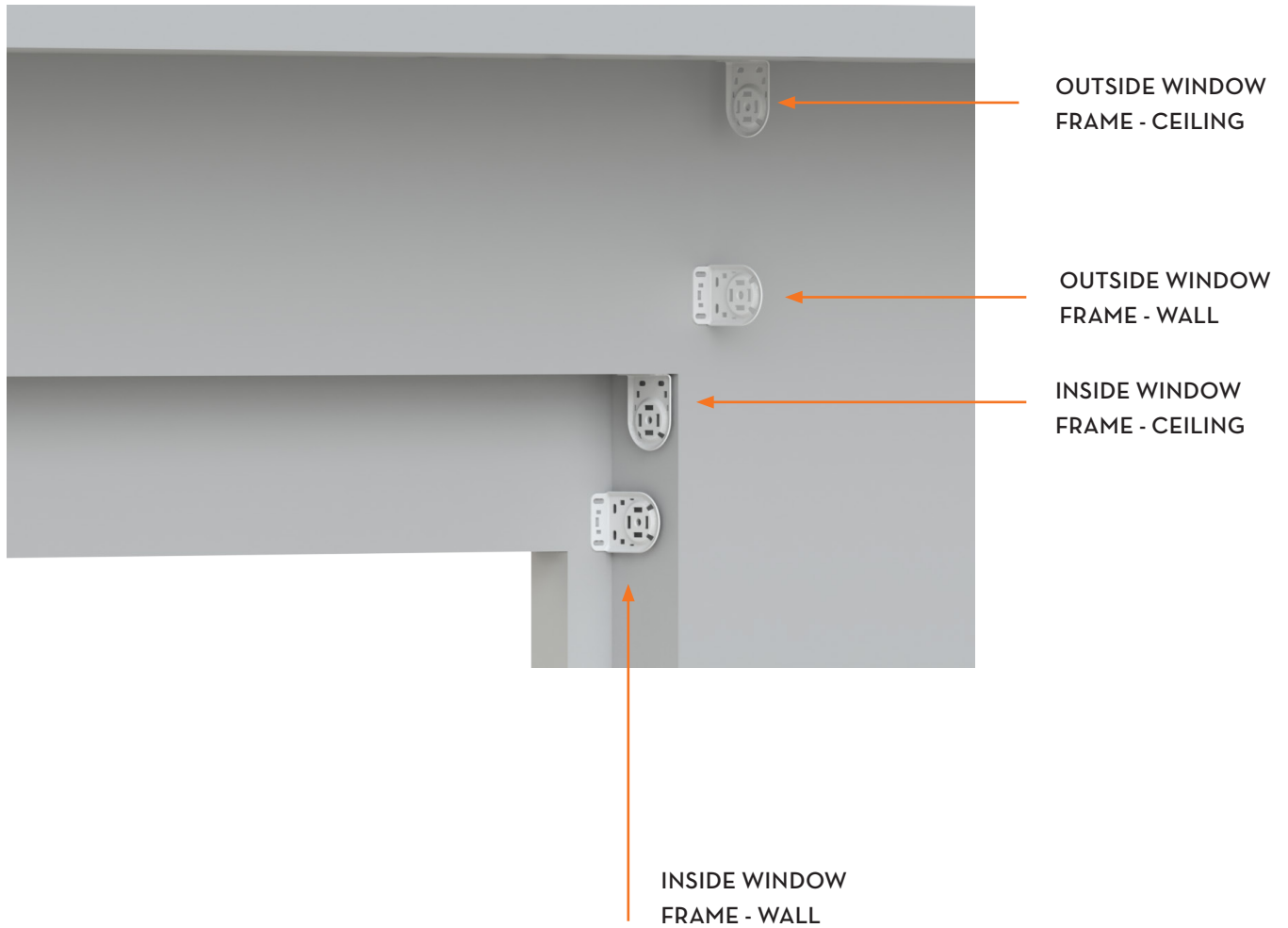


OUTSIDE WINDOW FRAME



INSIDE WINDOW FRAME

Newton High-Speed Lite-Lift®



Brackets shown are Open Roll (no fascia).



OUTSIDE WINDOW FRAME - CEILING



OUTSIDE WINDOW FRAME - WALL



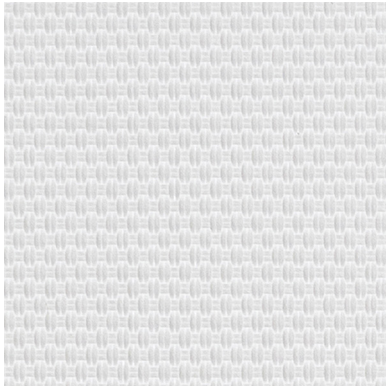
INSIDE WINDOW FRAME - CEILING



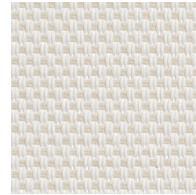
INSIDE WINDOW FRAME - WALL

FABRIC SPECIFICATIONS

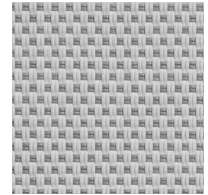
10,000 Series – 10101



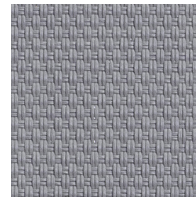
01 Limestone



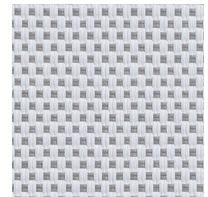
02 Limestone
Beige



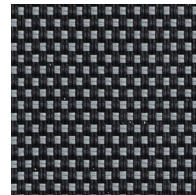
03 Ivory Grey



04 Light Grey



05 Limestone
Grey

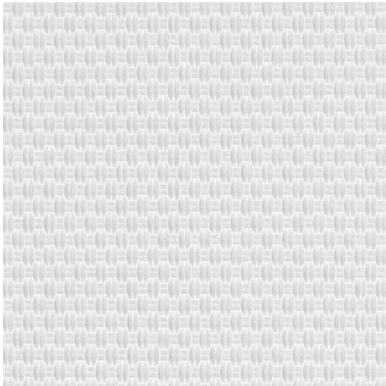


06 Slate Grey

Width	118"
Content	70% PVC 30% Polyester
Openness	1%
Regulatory	NFPA 701
Certifications	OEKO-TEX® Certified UL GREENGUARD® Gold Certified
Attributes	Printable

FABRIC SPECIFICATIONS

10,000 Series – 10103

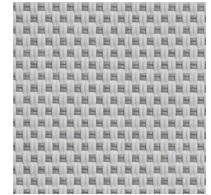


01 Limestone

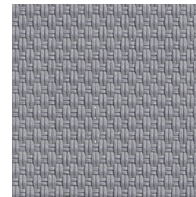
Width	118"
Content	70% PVC 30% Polyester
Openness	3%
Regulatory	NFPA 701
Certifications	OEKO-TEX® Certified UL GREENGUARD® Gold Certified
Attributes	Printable



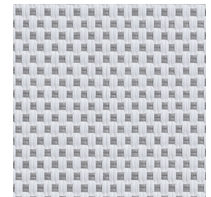
02 Limestone
Beige



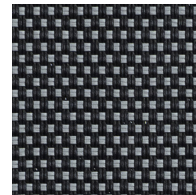
03 Ivory Grey



04 Light Grey



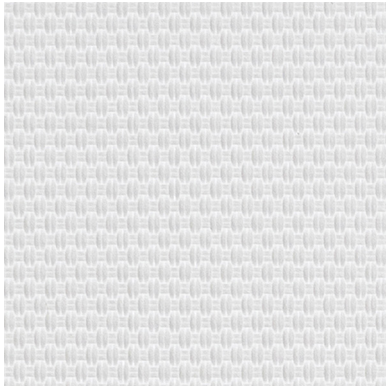
05 Limestone
Grey



06 Slate Grey

FABRIC SPECIFICATIONS

10,000 Series - 10105



01 Limestone

Width 118"

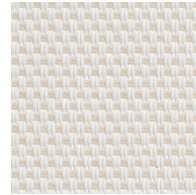
Content 70% PVC
30% Polyester

Openness 5%

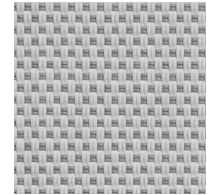
Regulatory NFPA 701

Certifications OEKO-TEX® Certified
UL GREENGUARD® Gold Certified

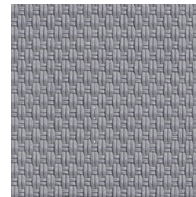
Attributes Printable



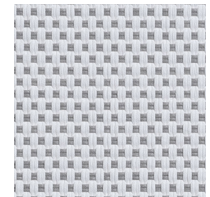
02 Limestone
Beige



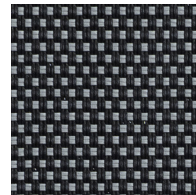
03 Ivory Grey



04 Light Grey



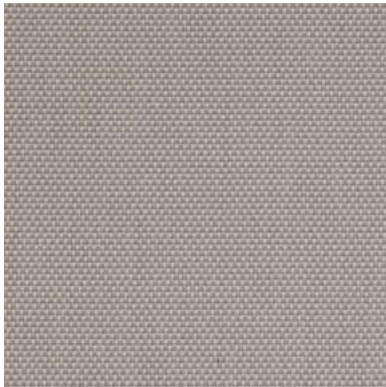
05 Limestone
Grey



06 Slate Grey

FABRIC SPECIFICATIONS

E Screen 1%

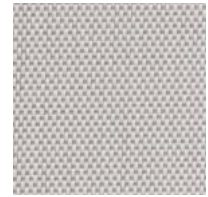


Pearl - Linen

Width	122"
Content	64% Vinyl 36% Fiberglass
Openness	1%
Regulatory	NFPA 701 California Title 19 CAN/ULC-S109-03 Small & Large Flame Test
Certifications	RoHS - Lead Free UL GREENGUARD® Gold Certified
Attributes	Printable Lead Free



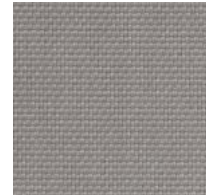
White -
White



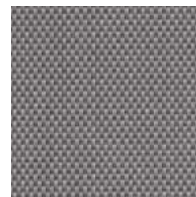
White -
Pearl



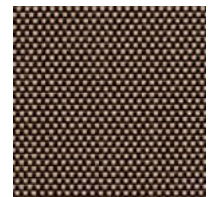
White -
Linen



Pearl -
Pearl



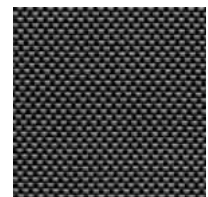
Pearl -
Grey



Charcoal -
Apricot



Charcoal -
Grey



Charcoal -
Greystone



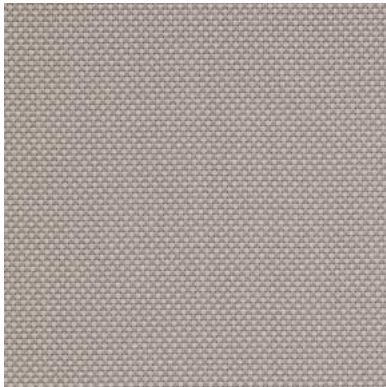
Charcoal -
Cocoa



Charcoal -
Charcoal

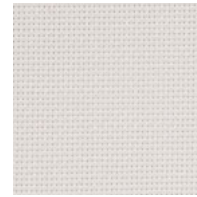
FABRIC SPECIFICATIONS

E Screen 3%

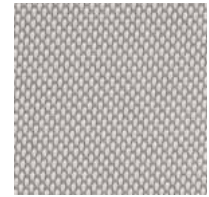


Pearl - Linen

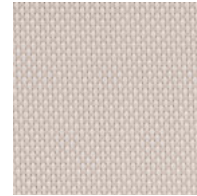
Width	122"
Content	64% Vinyl 36% Fiberglass
Openness	3%
Regulatory	NFPA 701 California Title 19 CAN/ULC-S109-03 Small & Large Flame Test
Certifications	RoHS - Lead Free UL GREENGUARD® Gold Certified
Attributes	Printable Lead Free



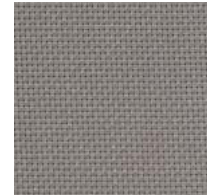
White -
White



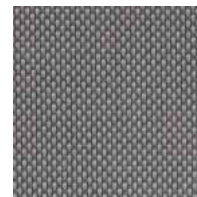
White -
Pearl



White -
Linen



Pearl -
Pearl



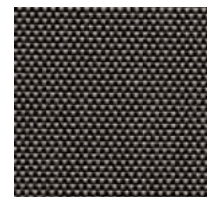
Pearl -
Grey



Charcoal -
Apricot



Charcoal -
Grey



Charcoal -
Greystone



Charcoal -
Cocoa



Charcoal -
Charcoal

FABRIC SPECIFICATIONS

E Screen 5%

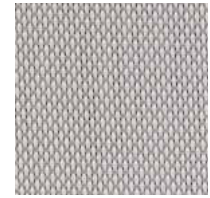


Pearl - Linen

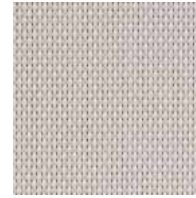
Width	122"
Content	64% Vinyl 36% Fiberglass
Openness	5%
Regulatory	NFPA 701 California Title 19 CAN/ULC-S109-03 Small & Large Flame Test
Certifications	RoHS - Lead Free UL GREENGUARD® Gold Certified
Attributes	Printable Lead Free



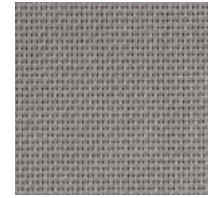
White -
White



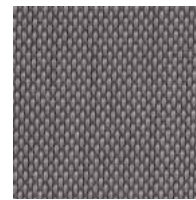
White -
Pearl



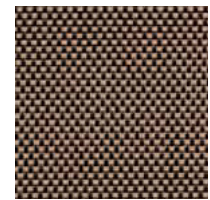
White -
Linen



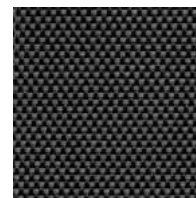
Pearl -
Pearl



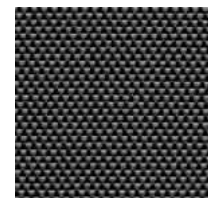
Pearl -
Grey



Charcoal -
Apricot



Charcoal -
Grey



Charcoal -
Greystone



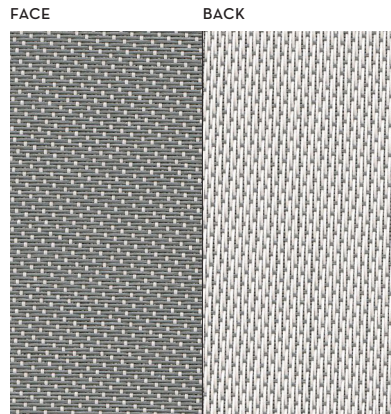
Charcoal -
Cocoa



Charcoal -
Charcoal

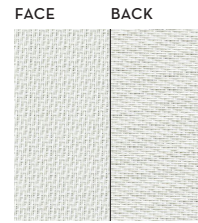
FABRIC SPECIFICATIONS

TexScreen 8101-SW2701

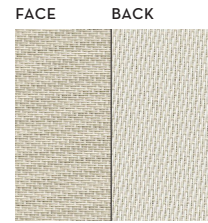


04 Grey-White

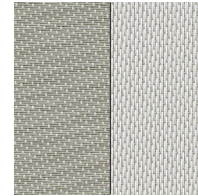
Width	126"
Content	64% Vinyl 36% Fiberglass
Openness	1%
Regulatory	NFPA 701 California Title 19 CAN/ULC-S109-03 Small & Large Flame Test
Certifications	UL GREENGUARD® Gold Certified
Attributes	Printable Microban® Lead Free



01 White



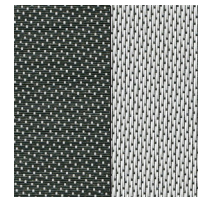
02 Beige-White



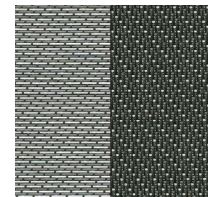
03 Pearl-White



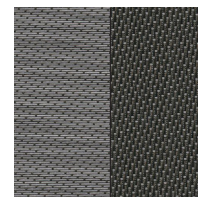
05 Chestnut-White



06 Charcoal-White



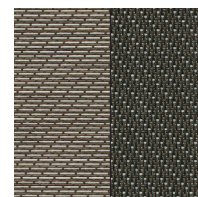
07 Slate-Charcoal



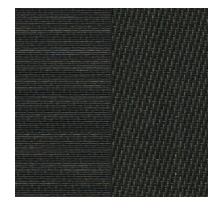
08 Grey-Charcoal



09 Taupe-Charcoal



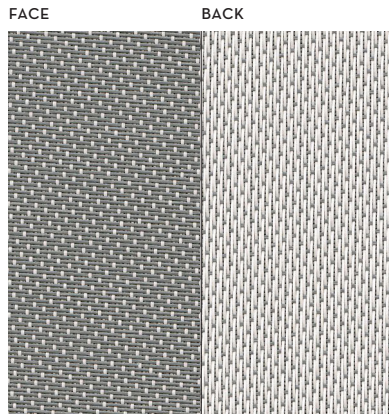
10 Brown-Charcoal



11 Charcoal

FABRIC SPECIFICATIONS

TexScreen 8103-SW2703



04 Grey-White

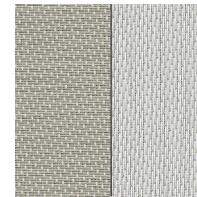
Width	126"
Content	64% Vinyl on Fiberglass 36% Fiberglass
Openness	3%
Regulatory	NFPA 701 California Title 19 CAN/ULC-S109-03 Small & Large Flame Test
Certifications	UL GREENGUARD® Gold Certified
Attributes	Printable Microban® Lead Free



01 White



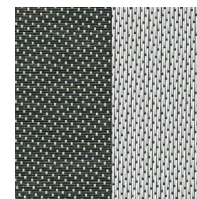
02 Beige-White



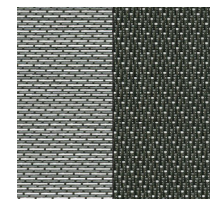
03 Pearl-White



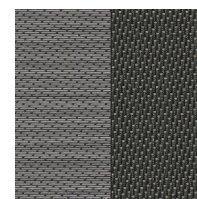
05 Chestnut-White



06 Charcoal-White



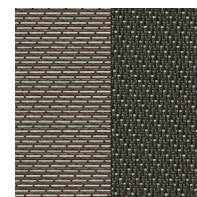
07 Slate-Charcoal



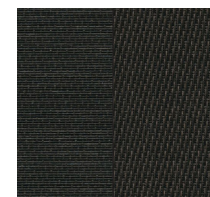
08 Grey-Charcoal



09 Taupe-Charcoal



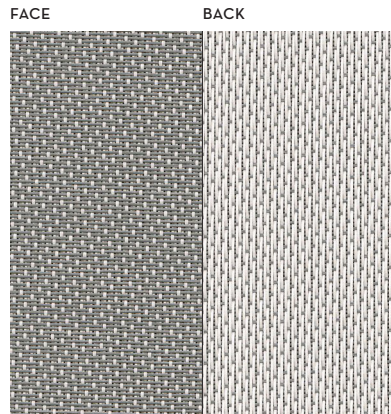
10 Brown-Charcoal



11 Charcoal

FABRIC SPECIFICATIONS

TexScreen 8105-SW2705



04 Grey-White

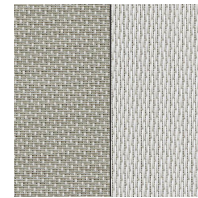
Width	126"
Content	66% Vinyl on Fiberglass 34% Fiberglass
Openness	5%
Regulatory	NFPA 701 California Title 19 CAN/ULC-S109-03 Small & Large Flame Test
Certifications	UL GREENGUARD® Gold Certified
Attributes	Printable Microban® Lead Free



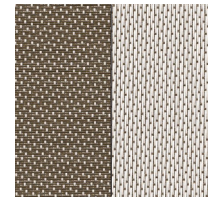
01 White



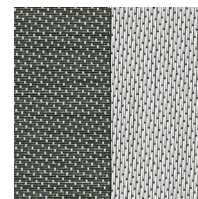
02 Beige-White



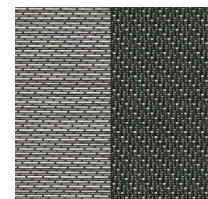
03 Pearl-White



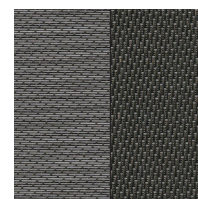
05 Chestnut-White



06 Charcoal-White



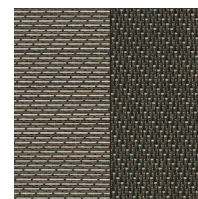
07 Slate-Charcoal



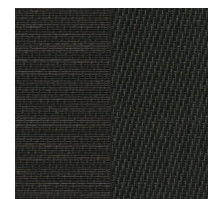
08 Grey-Charcoal



09 Taupe-Charcoal



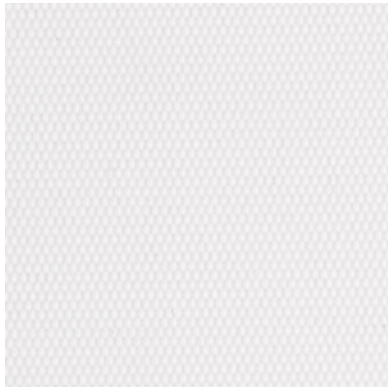
10 Brown-Charcoal



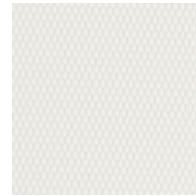
11 Charcoal

FABRIC SPECIFICATIONS

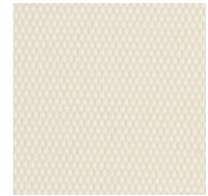
Delta FR-TeXOpaque 6200



01 White-White



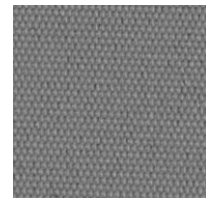
02 Off White-White



03 Vanilla-White



04 Pewter-White



05 Light Grey

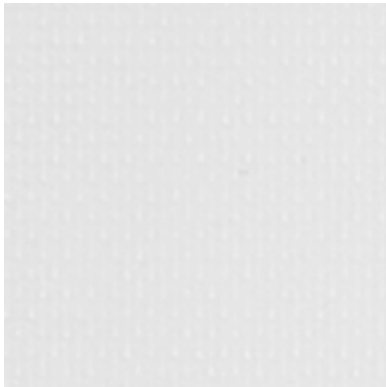


06 Anthracite-White

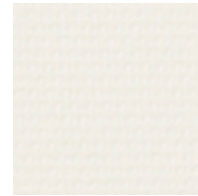
Width	118"
Content	100% Polyester
Openness	Blackout
Regulatory	NFPA 701 CAN/ULC-S109
Certifications	
Attributes	Printable PVC Free

FABRIC SPECIFICATIONS

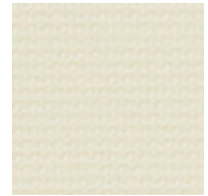
Versa-**T**ex**O**paque 6500



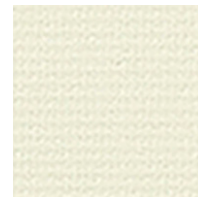
01 White-White



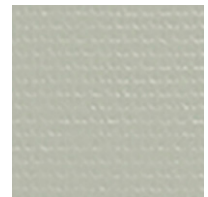
02 Pearl-White



03 Bone-White



04 Vanilla-White



05 Grey-White



06 Black-White

Width	72"
Content	75% PVC Coating 25% Fiberglass
Openness	Blackout
Regulatory	NFPA 701
Certifications	UL GREENGUARD® Gold Certified
Attributes	Printable Antibacterial Lead Free

FABRIC SPECIFICATIONS

PATTERN NAME	WIDTH	CONTENT	OPENNESS	REGULATORY	CERTIFICATIONS	ATTRIBUTES
10,000 Series - 10101	118"	70% PVC 30% Polyester	1%	NFPA 701	OEKO-TEX® Certified UL GREENGUARD® Gold Certified	Printable
10,000 Series - 10103	118"	70% PVC 30% Polyester	3%	NFPA 701	OEKO-TEX® Certified UL GREENGUARD® Gold Certified	Printable
10,000 Series - 10105	118"	70% PVC 30% Polyester	5%	NFPA 701	OEKO-TEX® Certified UL GREENGUARD® Gold Certified	Printable
E Screen 1%	122"	64% Vinyl 36% Fiberglass	1%	NFPA 701 California Title 19 CAN/ULC- S109-03 Small & Large Flame Test	RoHS - Lead Free UL GREENGUARD® Gold Certified	Printable Lead Free
E Screen 3%	122"	64% Vinyl 36% Fiberglass	3%	NFPA 701 California Title 19 CAN/ULC- S109-03 Small & Large Flame Test	RoHS - Lead Free UL GREENGUARD® Gold Certified	Printable Lead Free

PATTERN NAME	WIDTH	CONTENT	OPENNESS	REGULATORY	CERTIFICATIONS	ATTRIBUTES
E Screen 5%	122"	64% Vinyl 36% Fiberglass	5%	NFPA 701 California Title 19 CAN/ULC- S109-03 Small & Large Flame Test	RoHS - Lead Free UL GREENGUARD® Gold Certified	Printable Lead Free
Texscreen 8101 - SW2701	126"	64% Vinyl 36% Fiberglass	1%	NFPA 701 California Title 19 CAN/ULC- S109-03 Small & Large Flame Test	UL GREENGUARD® Gold Certified	Printable Microban® Lead Free
Texscreen 8103 - SW2703	126"	64% Vinyl on Fiberglass 36% Fiberglass	3%	NFPA 701 California Title 19 CAN/ULC- S109-03 Small & Large Flame Test	UL GREENGUARD® Gold Certified	Printable Microban® Lead Free
Texscreen 8105 - SW2705	126"	66% Vinyl on Fiberglass 34% Fiberglass	5%	NFPA 701 California Title 19 CAN/ULC- S109-03 Small & Large Flame Test	UL GREENGUARD® Gold Certified	Printable Microban® Lead Free
Delta FR - TexOpaque 6200	118"	100% Polyester	Blackout	NFPA 701 CAN/ULC-S109		Printable PVC Free
Versa - TexOpaque 6500	72"	75% PVC Coating 25% Fiberglass	Blackout	NFPA 701	UL GREENGUARD® Gold Certified	Printable, Antibacterial Lead Free

800.999.0400
standardtextile.com/interiors

Newton High-Speed Lite-Lift® is a registered trademark of 7912854 Canada Inc. and used under license by Altex Inc.
©2024. Standard Textile Co., Inc. All rights reserved.

STANDARD
TEXTILE est. 1940